

EPSON



# SPEARHEADING INDUSTRIAL STANDARDS IN PHOTOGRAPHIC REPRODUCTION.

## Impeccable print quality in spectacular accuracy with Epson's P-series printers.

When you require exemplary prints that are top-class in quality, precision, and colour accuracy, trust Epson's P-series printers to weave their magic and deliver just what you need. Equipped with Epson's proprietary PrecisionCore™ MicroTFP printheads, the SureColor P-series photographic printers revel in their precise and reliable print productivity. Coupled with colour-accurate reproduction using genuine UltraChrome PRO 6 inks, you can now get gallery-quality picturesque prints easily and efficiently.

ENGINEERED FOR good



### Highest Standards in Print

The additional grey ink in the UltraChrome PRO 6 inks offers smooth and natural colour gradation in every print.

### Installation Flexibility

Flat top design allows for easy placement of printer in challenging and narrow spaces, giving businesses more options in installation.

### Boosted Efficiency

Improved print speeds and continuous automatic printing with dual rollers\* help ensure high productivity with minimal downtime.

Find out more at [www.epson.com.sg/gobig-photo](http://www.epson.com.sg/gobig-photo)

EpsonSingapore 
 EpsonSingapore 
 EpsonSoutheastAsia 
 Epson Singapore 
 EpsonSingapore

**Epson Singapore Pte Ltd** 438B Alexandra Road, Block B Alexandra Technopark, #04-01/04, Singapore 119968. Tel: (65) 6586-5500  
**Epson Customer Care Center** 100G Pasir Panjang Road, #01-09 Interlocal Centre, Singapore 118523. Epson Helpdesk: 800 120 5564. Please refer to [www.epson.com.sg/contact](http://www.epson.com.sg/contact) for opening hours.

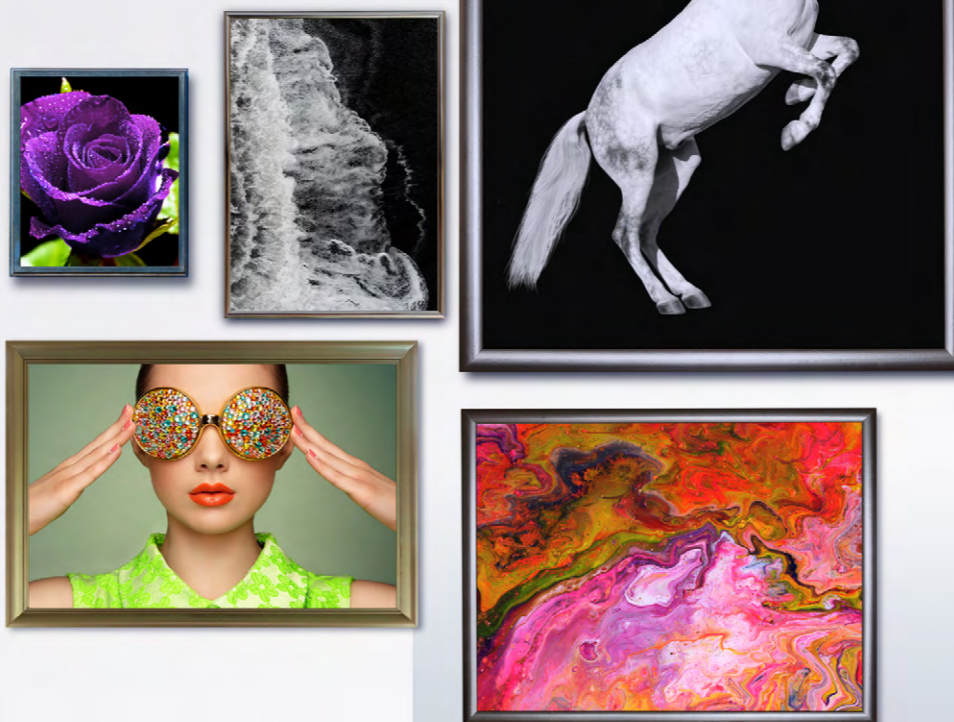
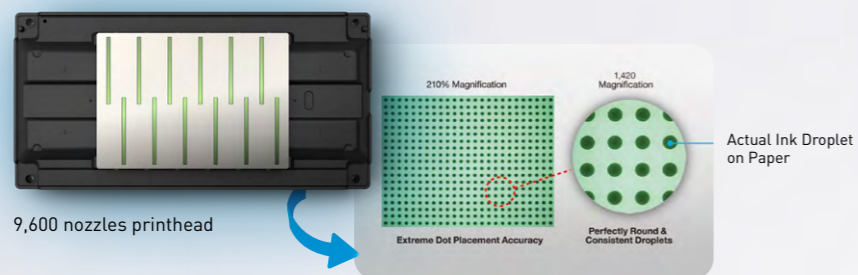
# Experience the Magic

Epson SureColor P-series photographic printers deliver superior detail-accurate images thanks to the latest colour printing technologies. With Epson's PrecisionCore™ Thin Film Piezo (TFP) printhead and UltraChrome™ all-pigment ink sets, uncompromising image consistency and immaculate colour quality are evident in every print. The P-series printers are integrated with industry-leading software solutions, which create seamless work processes that increase efficiency for businesses while meeting the demanding needs of the photo, proofing and graphic arts industry.

## Unmatched Precision

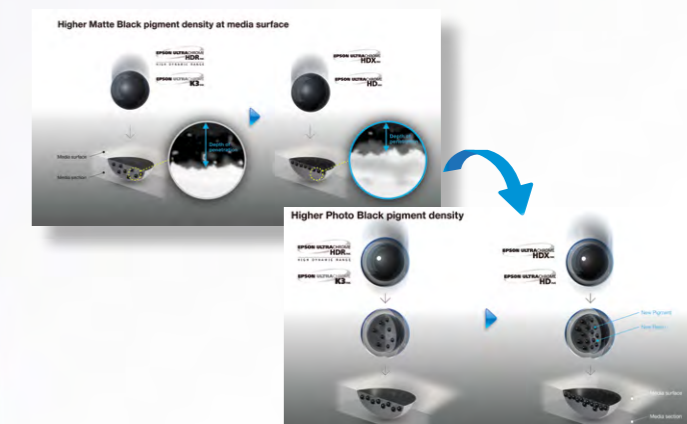


Epson's PrecisionCore™ technology delivers unparalleled colour-matching capability in every print, enabling ultra-precise control of dot size, shape and placements with its revolutionary printhead. The print nozzles can also produce a wide variety of droplet sizes, allowing fine detail and quick filling of larger areas at a single pass.



## Latest Generation of Professional-Quality Pigment Inks

Epson's revolutionary Ultrachrome HD inks ensure colour-accurate prints, delivering stunning vibrancy in every photo. With the new addition of Photo Black and Matte Black inks, images are printed with greater colour depth; especially when printing black and white images. In addition, the improved black ink density and higher D-Max value, the new black ink is 1.5 times denser than the previous ink formulation, providing significant improvements to the overall contrast ratio and optical clarity.



## Photographic Perfection and Accuracy

More vibrant colour,  
 more detailed tonal gradation



There are many variables in the colour reproduction process generated by the Epson P-series and any one of which may affect the quality of the PANTONE® colour simulation, including: type of driver or RIP used, type of paper used, type of ink, toner or colourant used, resolution, rendering intent used, dot structures/halftones/screening, print engine and other print settings.  
 \*PANTONE® is the property of Pantone LLC. 99% coverage of PANTONE® FORMULA GUIDE solid coated palette based on Epson Proofing Paper White Semi-matte printed with Epson printer driver at 2880x1440dpi. PANTONE® coverage may vary when printed with a third-party RIP.

## Unparalleled 99% PANTONE® Coverage

Utilising a three-level black ink technology that simultaneously employs Grey, Light Grey and Light Light Grey, the innovative Epson UltraChrome pigment inks produce brilliant black density and grey balance in sharp definition. On the media surface, the UltraChrome HDX, HD matte, and photo black inks achieve a much higher pigment density, making sure that the pigments do not penetrate too deep when printing on third-party media.

With the newly-added Violet ink<sup>^</sup>, the Ultrachrome HDX ink achieves a wider colour gamut, allowing it to hit spot and client-specific colours accurately, achieving an unparalleled 99% max certified PANTONE® coverage\*. The various ink configurations also aid in achieving impeccable print quality for both colour and monochrome reproductions.

<sup>^</sup>For selected models.

## Epson AccuPhoto HDR Screening



Violet  
 EPSON ULTRACHROME HDX<sub>INK</sub>

- Wider colour coverage with vivid colour reproduction
- Less chance to print monochrome images



Light Light Black  
 EPSON ULTRACHROME HDX<sub>INK</sub>

- Wider colour coverage with detailed reproduction of dark-colour tonal gradations



EPSON ULTRACHROME HD<sub>INK</sub>

- Decent (more than 4-colour colour coverage with more detailed reproduction of dark-colour tonal gradations)

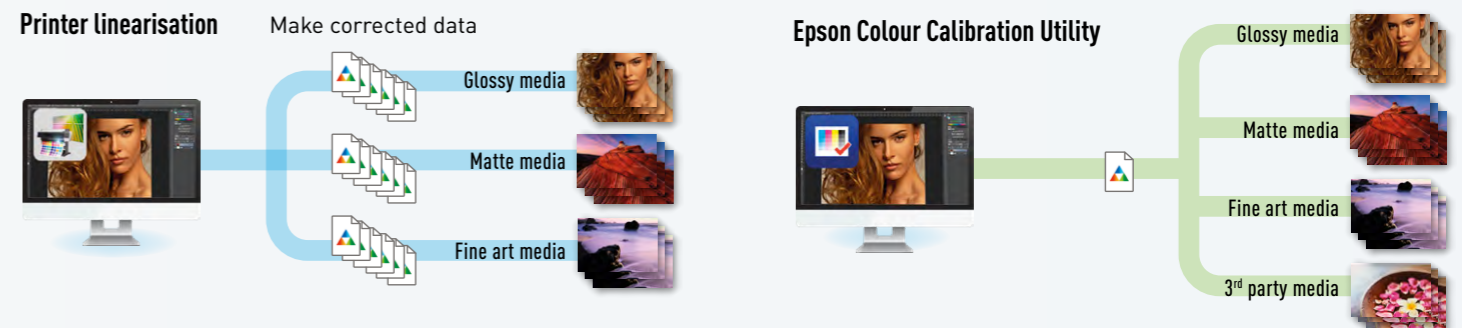
Advanced ten-colour screening algorithm delivering prints with superior colour and clarity, producing extremely fine blends and subtle photographic transitions.

With Epson AccuPhoto HDR Screening, each print contains extremely accurate highlight-to-shadow details with no visible photographic graininess.

## Efficient Workflow Solution

### Epson Colour Calibration Utility

To work more efficiently across multiple networked printers, the P-series printers are equipped with Epson Colour Calibration Utility, which measures colour density and concentration, allowing printer network management from a central point. This makes calibrating your printers easier and faster as the derivatives can calibrate their colours based on the base printer by transferring the colour chart, increasing overall productivity.



### Epson Print Layout Software

This plug-in for Adobe Photoshop, Lightroom, and Nikon ViewNX-i includes a set of template layouts and supports ICC soft proofing, colour production, preview, custom media registration and panorama layouts. Along with a set of colour modes, including advanced black and white, to create different finishes and moods. The software operates via intuitive and consistent controls including slider bars and colour wheels for precise and easy adjustments.

# The Efficient Remote Monitoring System for Large Format Printers



## Epson Cloud Solution PORT

Managing your printers is made easy and hassle-free with Epson's Cloud Solution PORT. Operators can monitor equipment and printer fleet across different sites from production floor or remotely, on PC or a mobile device without fuss. Boost operational efficiency by controlling, analysing and managing your printer fleet centrally from one intuitive interface while troubleshooting any rare issues.

Benefits of Epson Cloud Solution PORT:

### Real-Time Fleet Monitoring & Issue Management

Epson Production Monitor reduces printer fleet downtime by providing real-time updates on print job errors and disruptions, and allows remote monitoring of your fleet's status and issues from iOS and Android devices.

### Enjoy cost transparency

With our dynamic user-friendly Cost Reporting feature, you can easily check and customise expenses, and adjust views effortlessly for multiple units and specific criteria.

### Enjoy peace of mind with end-to-end security

Epson is committed to developing robust and secure solutions, engaging service providers that meet global security standards and safeguarding our customer's data privacy.



## Product Positioning Chart



# Brilliance in Every Print

SC-P5330



A compact photo printer that does not compromise on quality, the SC-P5330 is your perfect solution for impeccable colour reproduction in every print. Utilising Epson's Micro Piezo® printhead and UltraChrome™ PRO 10 all-pigment ink set, every image is dynamic and vibrant, with detailed consistency in spectacular colours.

## Consistently Vivid

Experience an upgraded level of image perfection with the SC-P5330, which utilises the UltraChrome™ PRO 10 ink set with Violet for enhanced blue reproduction and a wider colour gamut. This synergises perfectly with the printer's Carbon Black and Black Enhance Overcoat print modes that provide higher levels of black density and increased contrast with smooth gradations.



## Dedicated Black Ink Channels

Achieve continuous printing with the dedicated Matte Black and Photo Black ink channels.



## Convenience Driven

### Epson ColorBase Software

An easy to use colour calibration tool that meets the demands of photographers and graphic arts professionals, Epson ColorBase provides consistent colour quality throughout the printing process.

Supporting colour calibration from print to print and/or printer to printer, Epson ColorBase makes print management easy and reliable. It enhances remote printing applications with critical colour calibration requirements and keeps a history of calibration files for easy reference.

### Epson Print Layout Software

With easy access to all major functions, the Epson Print Layout software also helps to manage print layouts and colours with standard bundled industry-leading RIP software. Coupled with high-precision media feed technology, operators are ensured of smooth operation of their printers even when unattended.

## Archival Prints

Standing the test of time, our Fine Art prints revel in its archival properties with colours lasting up to 60 years of light fastness\*.



\*Based on JEITA CP-3901A's standard for the measurement: glossy A4 paper, temperature at 23°C and humidity at 50%.

ULTRACHROME  
PRO 10 INK

Media Width  
17"

# Explosion of Vivid Colours With Efficiency and Excellence

## SC-P7530/P9530



### Widest Colour Gamut

Equipped with Epson's newly-developed UltraChrome PRO 12 inks, the SC-P7530 and SC-P9530 delivers a wide range of colours, reproducing every detail with unrivalled brilliance and accuracy. With the all-new 2.6-inch PrecisionCore MicroTFP printhead, these printers boast a productive workflow with dedicated channels for Matte and Photo Black inks.



Combining efficiency and quality, the SC-P7530 and SC-P9530 are fitted with PrecisionCore MicroTFP printhead, printing at 300dpi resolution with 12 channels. With smoother gradations and accurate texture reproduction, image quality is enhanced by Matte Black, Photo Black and Light Light Black inks, which are achieved through black enhancement overcoating technology.

### Wide Range of Applications

Designed to print with a wide range of applications, professional photographers, fine art reproduction, packaging and contract proofers can now easily print with convenience. Even those that demand the highest print quality can unleash their creative freedom and print on a wide variety of media, including fine art papers, canvases and photo papers, without compromising on quality. The SC-P7530 and SC-P9530 photo printers support printing of up to 44" width media.

\*Applicable to SC-P9530 only.



### Designed to Last

Epson's SC-P7530 and SC-P9530 photo printers come with additional features such as a sealed roll media door for a dust-proof design and an integrated LED light to view projects while printing.

Catering to creatives that demand the most outstanding standards in printing, the SC-P7530 and SC-P9530 deliver perfect colour reproduction by leveraging on Epson's new UltraChrome PRO 12 pigment inks and PrecisionCore MicroTFP printhead technology. Ideal for Photo, Fine Art, Graphic Design and Proofing applications, be amazed by the explosion of vibrancy and precision in every print.

**ULTRACHROME  
PRO 12<sub>INK</sub>**

Media Width

24"

SC-P7530

Media Width

44"

SC-P9530

# Deliver Top Notch Gallery-quality Prints

## SC-P6530E/P6530D

### Accurate Colour Reproduction

Delivering superb image quality with true-to-life colour accuracy, Epson's UltraChrome PRO 6 inks bring prints to a whole new level of professionalism.

### Print That Last

Epson's UltraChrome PRO 6 inks are water-, smudge- and fade-resistant, allowing prints to be durable and long-lasting.



Water and smudge resistant

Fade resistant

### Epson Smart Panel

With the Epson Smart Panel app, users can set up, monitor, print and scan through an iOS or Android device.

Conveniently set up, monitor, print, and scan on your Epson printers and easily commence print jobs from your fingertips. With a wide variety of configuration features, you can also customise the app according to your requirements into an all-in-one management app.



### Seamless Operation For SC-P6530D only

Operating with top-tier reliability, the Epson SureColor SC-P6530D saves time and manpower with the Automatic Roll switching, simplifying the loading of new media rolls. Minimising downtime, the seamless operation ensures continuous printing and smooth operation.



Automatic Roll-Media Feed



Automatic Roll Switch

Epson's SureColor SC-P6530E and SC-P6530D employ an unprecedented level of innovative technology. Coupling PrecisionCore™ technology with UltraChrome PRO 6 Inks, high accuracy and resolution can be achieved allowing the finest details to stand out.

ULTRACHROME  
PRO 6 INK

Media Width  
24"

# Transform Ideas Into Vibrant True-To-Life Prints

SC-P8530D/DL/DM



## Gallery Standards

6-colour ink set delivers exceptionally wide colour gamut and high black density, producing photographic prints that are of gallery standards.



Photographic prints



Black-and-White prints

## Wide Variety of Media

Professional printing can be done on a variety of media, such as artist canvas or premium photo papers.



Matte media



Gloss media

## Up to 44" Wide Dual Roll Design

Management of prints is much easier with the dual roll 44" wide-format media configuration that maximises productivity and increases efficiency.



## Smoother Gradation for Professional Perfection

Utilising the innovative two-level black ink technology that simultaneously employs Photo Black and Matte Black, Epson's UltraChrome PRO 6 inks produce rich true-to-life black density and grey balance to ensure top-notch quality in every print. Generating smooth gradients, transitions, and neutral grayscale in every photo.



Delivering stunning picturesque prints in striking colours, Epson's SC-P8530D/P8530DL/P8530DM transform your ideas into vivid larger-than-life pieces of art with detailed precision. With high installation flexibility and seamless work process, businesses can now increase their productivity effortlessly with Epson's large format photographic printer.

ULTRACHROME  
PRO 6 INK

Media Width  
44"



# Unparalleled Vividness and Productivity



Epson's SC-P20070 photo printer leads the industry with its high performance, reliable and swift printing. Equipped with the revolutionary PrecisionCore MicroTFP printhead and UltraChrome™ PRO ink, experience magnificence in every print at affordable running costs.

## SC-P20070

### State-of-the-Art Standards

No more worrying about high-volume quality print at fast speeds. Thanks to Epson's UltraChrome PRO archival ink technology and the innovative PrecisionCore MicroTFP, expect remarkably vivid and sharp prints that are gallery standards and last up to 200 years. With four levels of grey, your prints will feature accurate transitions with very low grain even at the fastest print modes.



### Cost-Effective Production

Operating with reduced power consumption, businesses stand to gain with the reliable SC-P20070 printer as it requires minimum maintenance. Coming with large, cost-effective ink cartridges of up to 700ml, operators can also take advantage of the various configurations, such as an optional Postscript, Auto Take-Up system, and user selectable warranty and support packages.

### Efficiency Secured

Built to minimise downtime during printing, the SC-P20070 comes with a new media feeding system that can keep up with high-volume prints without compromising on quality. Achieve maximum output with the Realtime Media Adjustment and Feedback System, and Media Inductive Roller System, allowing the printer to operate smoothly even when unattended.



Media feed rollers

Media inductive rollers

### Range of Media



The SC-P20070 is a floor-standing printer with a 64" (1,626mm) wide carriage and improved flexible media handling, supporting basic bond paper, photo paper, transparent film, translucent back-lit and specialist synthetic media. It also accepts roll media via a spindle mounting with integrated tension adjustment and has a high-speed auto-cutter.



Media Width  
**64"**

# Industry-Grade Precision Printing

SC-P20530



The Epson SureColor SC-P20530 is a 64" large-format printer designed for professional photographers and fine art reproduction. It features PrecisionCore MicroTFP technology and a 12-colour UltraChrome PRO 12 ink set for exceptional detail, colour accuracy, and durability. With advanced media handling, high-capacity ink, and seamless connectivity, it ensures superior print quality and productivity for high-end print shops.

## Wider Colour Gamut with 12-Colour Ink Set

Utilising UltraChrome PRO 12 ink with the addition of Orange, Green, and Violet colours, the SC-P20530 offers a wider colour gamut, making it ideal for highly accurate and vibrant fine art and photographic prints.



10-colour ink set



12-colour ink set

## PrecisionCore MicroTFP Printhead

With two additional lines supporting the 12-colour ink set and 9,600 nozzles, this printer features dedicated channels for PK and MK black, reducing both printing time and ink consumption for greater efficiency.



Two additional lines support the 12-colour ink set.

## 99% PANTONE® Coverage

Achieve unparalleled colour accuracy and impeccable print quality for both colour and monochrome reproductions.

## Superior Black Enhancement

Enhanced black reproduction with Black Enhanced Overcoat (BEO) mode uses Light Grey ink to improve black density, contrast, and tonality, while reducing bronzing\*, making it ideal for high-quality black and white fine art photos.

\*Only on glossy paper.



Overcoat OFF

Overcoat ON

## Increased Productivity and Usability

Boasting a 1.6L bulk ink system for continuous printing with fewer changes and an intuitive 4.3-inch touchscreen display, this printer offers businesses both operational efficiency and reduced environmental impact.



1.6L Ink Packs

ULTRACHROME  
PRO 12 INK

Media Width  
64"

# INK & OPTIONS COMPATIBILITY CHART

PRINTER MODELS			SC-P5330	SC-P6530/P8530/P8530D	SC-P8530DL	SC-P7530/P9530	SC-P20070	SC-P20530 <b>NEW</b>
MAINTENANCE BOX			T55V / C13T619000	SC-P6530/P8530: T6997 / C13S210116 SC-P8530D: S210115 / C13S210115	S210115 / C13S210115	T6997 / C13T699700	T6193 / C13T619300	T6193 / C13T619300
INK TYPE (T-CODE / MODEL NUMBER)			T55V	T50S	T50S	T44V (350ml) / T44N (700ml)	T44N	T56J
<b>200ML</b> Ink Cartridge	Photo Black	●	C13T55V100					
	Cyan	●	C13T55V200					
	Vivid Magenta	●	C13T55V300					
	Yellow	●	C13T55V400					
	Light Cyan	●	C13T55V500					
	Vivid Light Magenta	●	C13T55V600					
	Grey	●	C13T55V700					
	Matte Black	●	C13T55V800					
	Light Grey	●	C13T55V900					
	Violet	●	C13T55VD00					
<b>350ML</b> Ink Cartridge	Grey	●		C13T48YE00				
	Photo Black	●		C13T48Y100		C13T44V100		
	Cyan	●		C13T48Y200		C13T44V200		
	Vivid Magenta / Magenta	●		C13T48Y300		C13T44V300		
	Yellow	●		C13T48Y400		C13T44V400		
	Light Cyan	●				C13T44V500		
	Vivid Light Magenta	●				C13T44V600		
	Light Grey	●				C13T44V700		
	Matte Black	●		C13T48Y800		C13T44V800		
	Light Light Grey	●				C13T44V900		
	Orange	●				C13T44VA00		
	Green	●				C13T44VB00		
	Violet	●				C13T44VD00		
<b>700ML</b> Ink Cartridge	Photo Black	●		C13T48R100		C13T44N100	C13T44N100	
	Light Light Grey	●				C13T44N900		
	Cyan	●		C13T48R200		C13T44N200	C13T44N200	
	Vivid Magenta / Magenta	●		C13T48R300		C13T44N300	C13T44N300	
	Yellow	●		C13T48R400		C13T44N400	C13T44N400	
	Light Cyan	●				C13T44N500	C13T44N500	
	Vivid Light Magenta	●				C13T44N600	C13T44N600	
	Light Black / Grey	●				C13T44N700	C13T44N700	
	Matte Black	●		C13T48R800		C13T44N800	C13T44N800	
	Dark Grey	●					C13T44NA00	
	Grey	●		C13T48RE00			C13T44N900	
	Orange	●				C13T44NA00		
	Green	●				C13T44NB00		
	Violet	●				C13T44ND00		
<b>1600ML</b> Ink Pack	Photo Black	●			C13T53J100			C13T56J100
	Cyan	●			C13T53J200			C13T56J200
	Vivid Magenta	●			C13T53J300			C13T56J300
	Yellow	●			C13T53J400			C13T56J400
	Light Cyan	●						C13T56J500
	Vivid Light Magenta	●						C13T56J600
	Grey	●			C13T53J700			C13T56J700
	Matte Black	●			C13T53J800			C13T56J800
	Light Grey	●						C13T56J900
	Orange	●						C13T56JA00
	Green	●						C13T56JB00
	Violet	●						C13T56JD00





## SPECIFICATIONS

<b>MODEL NUMBER</b>	<b>SC-P20070</b>
<b>SKU Number</b>	C11CE20402
<b>Printing Technology</b>	PrecisionCore Inkjet Technology, Variable-Sized Droplet Technology
Printing Method	PrecisionCore MicroTFP Printhead
Print Head	4,000 Nozzles
Nozzle Configuration	Black PK, MK, DGY, GY, LGY: 800 Nozzles
Colour	C, VM, Y, LC, VLM: 800 Nozzles
Maximum Resolution	2,400 x 1,200 dpi
Minimum Ink Droplet Volume	3.5pl
<b>Printing Specifications</b>	
Print Speed	Draft Mode (600 x 600 dpi): 1.9 minutes Normal Mode (1,200 x 1,200 dpi): 3.0 minutes Fine Mode (2,400 x 1,200 dpi): 5.6 minutes
<b>Ink System</b>	
Ink Type	Pigment Ink
Ink Brand Name	UltraChrome PRO Ink
Colour	Photo Black, Cyan, Vivid Magenta, Yellow, Matte Black, Dark Grey, Grey, Light Grey, Light Cyan, Vivid Light Magenta
Ink Capacity	700ml
Ink Case	Ink Cartridge
<b>Paper Handling</b>	
Paper Path	Roll (Single Roll), Cut Sheet (Manual Feed)
Paper Feed Method	Friction Feed
Paper Width (Roll)	254 (10") – 1,626 (64") mm
Paper Width (Cut Sheet)	210 (A4) – 1,118 (44") mm
Paper Thickness (Roll)	0.08 – 1.50 mm
Borderless Sizes	254mm (10"), 300mm (11.8"), 329mm (A3+/A3++), 406mm (16"), 432mm (17"/USC), 508mm (20"), 515mm (20.3"/B2), 594mm (A1), 610mm (24"/A0+), 728, (29"/B1), 841mm (A0), 914mm (36"/A0+), 1,030mm (B0), 1,118mm (44"/B0+), 1,270mm (50"), 1,372mm (54"), 1,524mm (60")
Roll Paper Remaining	The remaining amount is managed by the barcode printed on roll paper
<b>Connectivity</b>	
Interface <sup>1</sup>	Hi-Speed USB
Printer Language	ESC/P raster
USB Direct Print	Yes
Memory	1.5GB
<b>Operating System</b>	
PC System Requirement	Windows XP, Vista, 7, 8, 8.1 (32/64bit) or later
Mac System Requirement	Macintosh Mac OS X 10.6.8 or later
<b>Utility Software</b>	
Bundled in CD	User's Guide (EN), Network Guide (EN), LFP RemotePanel 2, Epson Color Calibration Utility, EpsonNet Setup, EpsonNet Config, EpsonNet Print (Windows only)
Web Delivery	LFP Accounting Tool (Job monitoring, consumable cost tracking), HDD Utility software (Web download)
<b>Electrical Specifications</b>	
Voltage	AC 100 – 240V, 50/60Hz
Rated Current	AC 100V 3.4AAC 100-240V 3.4-1.6A
Power Consumption	Operating: Approx. 95W, Sleep: Approx. 2.8W, Standby: Approx. 0.5W
<b>Environmental Conditions</b>	
Temperature	Operating: 10°C to 35°C / Storage: -20°C to 40°C
Humidity	Operating: 20% to 80% (no condensation), Storage: 5% to 85% (no condensation)
<b>Dimensions &amp; Weight</b>	
Dimension (W x D x H)	2,415 x 760 x 1,145 mm
Weight	Approx. 171 kg

<sup>1</sup> Interface is 1000BASE-T.

## Dimensions and Weight

**SC-P20070**  
**Weight:** Approx. 171 kg



## WHAT'S IN THE BOX

- Printer
- Initial ink cartridge (110ml)
- AC power cable
- Setup guide
- Software CD-ROM
- Maintenance box

## OPTIONS

Auto Cutter Spare Blade	C13S210040
Cleaning Stick	C13S090013
Maintenance Box	C13T619300
Auto Take-up Reel Unit	C12C932201
Roll Adapter	C12C932231
Adobe® PostScript® 3™	
Expansion Unit	C12C891131
Hard Disk Unit	C12C848031

©2024 Epson Singapore Pte Ltd. All Rights Reserved. Reproduction in part or in whole, without the written permission from Epson, is strictly prohibited.

EPSON is a registered trademark of Seiko Epson Corporation.

All other product names and other company names used herein are for identification purposes only and are the trademarks or registered trademarks of their respective owners.

Epson disclaims any and all rights in those marks. Projected images shown herein are simulations. The actual product design and contents may vary. Specifications are subject to change without notice and may vary between countries. Please check with local Epson offices for more information.

Apple, iPad and iPhone are trademarks of Apple Inc., registered in the U.S. and other countries. App Store is a service mark of Apple Inc.

Android is a trademark of Google Inc.

Dealer's Stamp

Information correct at time of printing.  
Printed September 2024

## SPECIFICATIONS

<b>MODEL NUMBER</b>	<b>SC-P20530</b>
<b>SKU Number</b>	C11CK99402
<b>Printing Technology</b>	PrecisionCore Inkjet Technology, Variable-Sized Droplet Technology
Printing Method	PrecisionCore MicroTFP Printhead
Print Head	9,600 Nozzles
Nozzle Configuration	Black PK, MK, GY, LGY: 800 Nozzles
Colour	C, VM, Y, LC, VLM, OR, GR, V: 800 Nozzles
Maximum Resolution	2,400 x 1,200 dpi
Minimum Ink Droplet Volume	3.5pl
<b>Printing Specifications</b>	
Print Speed	Plain Paper Draft Mode: Approx. 122 m <sup>2</sup> /h
Line Accuracy	±0.2% or ±.26 mm (whichever greater)
<b>Ink System</b>	
Ink Type	Pigment Ink
Ink Brand Name	UltraChrome PRO 12 Ink
Colour	Photo Black, Cyan, Vivid Magenta, Yellow, Matte Black, Grey, Light Grey, Light Cyan, Vivid Light Magenta, Orange, Green, Violet
Ink Capacity	1,600ml
Ink Case	Ink Supply Unit
<b>Paper Handling</b>	
Paper Path	Roll (Single Roll), Cut Sheet (Manual Feed), Poster Board (Manual Feed)
Paper Feed Method	Friction Feed
Paper Width (Roll)	254 (10") – 1,626 (64") mm
Paper Width (Cut Sheet)	210 (A4) – 1,118 (44") mm
Paper Thickness (Roll)	0.08 – 0.5 mm
Paper Margin (Cut Sheet) <sup>1</sup>	With Border (Top, Right, Left): Min. 3 mm / (Bottom): Min 14 mm Borderless (Top): Min. 3 mm / (Bottom): Min 14 mm / (Right, Left): Min. 0 mm
Paper Margin (Roll) <sup>1</sup>	With Border (Top, Right, Left, Bottom): Min. 3 mm Borderless (Top, Right, Left, Bottom): Min. 0 mm
Maximum Printable Length <sup>2</sup>	91 m
Maximum Reel Diameter <sup>3</sup>	Max. 190 mm
Maximum Reel Weight <sup>3</sup>	Max. 24 Kg
Maximum Roll Diameter <sup>3</sup>	Max. 170 mm
Maximum Reel Weight <sup>3</sup>	Max. 24 Kg
Borderless Sizes	254mm (10"), 300mm (11.8"), 330mm (A3+/A3++), 406mm (16"), 432mm (17"/USC), 508mm (20"), 515mm (20.3"/B2), 594mm (A1), 610mm (24"/A0+), 728, (29"/B1), 841mm (A0), 914mm (36"/A0+), 1,030mm (B0), 1,118mm (44"/B0+), 1,270mm (50"), 1,372mm (54"), 1,524mm (60"), 1,626mm (64")
Roll Paper Remaining	The remaining amount is managed by the barcode printed on roll paper
<b>Connectivity</b>	
Interface	SuperSpeed USB, 100BASE-TX / 1000BASE-T (Option)
Printer Language	ESC/P raster, Adobe PostScript 3 <sup>4</sup> , Adobe PDF 1.7 <sup>4</sup> , TIFF <sup>4</sup> , JPEG <sup>4</sup> , CALS G4 (Type I) <sup>4</sup> , EPS <sup>4</sup>
USB Direct Print	Yes
Memory	Physical 6GB (Printer H/W)
<b>Operating System</b>	
PC System Requirement	Windows XP, Vista, 7, 8, 8.1 (32/64bit) or later
Mac System Requirement	Macintosh Mac OS X 10.6.8 or later
<b>Utility Software</b>	
Bundled in CD	User's Guide (EN), Network Guide (EN), LFP RemotePanel 2, Epson Color Calibration Utility, EpsonNet Setup, EpsonNet Config, EpsonNet Print (Windows only)
Web Delivery	LFP Accounting Tool (Job monitoring, consumable cost tracking), HDD Utility software (Web download)
<b>Electrical Specifications</b>	
Voltage	AC 100 – 240V, 50/60Hz
Rated Current	AC 100V 3.4AAC 100-240V 3.4-1.6A
Power Consumption	Operating: Approx. 95W, Sleep: Approx. 2.2W, Standby: Approx. 0.5W
<b>Environmental Conditions</b>	
Temperature	Operating: 10°C to 35°C / Storage: -20°C to 40°C
Humidity	Operating: 20% to 80% (no condensation), Storage: 5% to 85% (no condensation)
<b>Dimensions &amp; Weight</b>	
Dimension (W x D x H)	2,740 x 976 x 1,145 mm
Weight	Approx. 224 kg

<sup>1</sup> Might differ depends on applications/media.

<sup>2</sup> Auto Take-up Reel Unit (Option) is needed.

<sup>3</sup> Printable length is limited depending on restrictions of operating systems or applications.

<sup>4</sup> Adobe® PostScript® 3™ Expansion Unit is needed.

## Dimensions and Weight

**SC-P20530 (Stowed Position)**  
**Weight:** Approx. 224 kg



## WHAT'S IN THE BOX

- Printer
- AC power cable
- Setup guide
- Software CD-ROM
- Maintenance box

## OPTIONS

Auto Cutter Spare Blade	C13S210040
Bulk Ink Solution	C12C939161
Cleaning Sheet	C13S400045
Cleaning Stick	C13S090013
Maintenance Box	C13T619300
Auto Take-up Reel Unit	C12C932201
Roll Adapter	C12C932231
Adobe® PostScript® 3™	
Expansion Unit	C12C939191
SSD Unit	C12C936671

©2024 Epson Singapore Pte Ltd. All Rights Reserved. Reproduction in part or in whole, without the written permission from Epson, is strictly prohibited.

EPSON is a registered trademark of Seiko Epson Corporation.

All other product names and other company names used herein are for identification purposes only and are the trademarks or registered trademarks of their respective owners.

Epson disclaims any and all rights in those marks. Projected images shown herein are simulations. The actual product design and contents may vary. Specifications are subject to change without notice and may vary between countries. Please check with local Epson offices for more information.

Apple, iPad and iPhone are trademarks of Apple Inc., registered in the U.S. and other countries. App Store is a service mark of Apple Inc.

Android is a trademark of Google Inc.

Dealer's Stamp

Information correct at time of printing.  
Printed September 2024

Find out more at [www.epson.com.sg/gobig-photo](http://www.epson.com.sg/gobig-photo)



**Epson Singapore Pte Ltd** 438B Alexandra Road, Block B Alexandra Technopark, #04-01/04, Singapore 119968. Tel: (65) 6586-5500  
**Epson Customer Care Center** 100G Pasir Panjang Road, #01-09 Interlocal Centre, Singapore 118523. Epson Helpdesk: 800 120 5564. Please refer to [www.epson.com.sg/contact](http://www.epson.com.sg/contact) for opening hours.

Find out more at [www.epson.com.sg/gobig-photo](http://www.epson.com.sg/gobig-photo)



**Epson Singapore Pte Ltd** 438B Alexandra Road, Block B Alexandra Technopark, #04-01/04, Singapore 119968. Tel: (65) 6586-5500  
**Epson Customer Care Center** 100G Pasir Panjang Road, #01-09 Interlocal Centre, Singapore 118523. Epson Helpdesk: 800 120 5564. Please refer to [www.epson.com.sg/contact](http://www.epson.com.sg/contact) for opening hours.